

ITS-200series IPv6 Training System



IPv4 32bit

Left



Already used

Explosive growth in network device diversity and mobile communications have overwhelmed IPv4 and driven the development of a next-generation Internet Protocol (IPv6), along with global adoption of networking technologies.

In addition to providing more address space, IPv6 not only increases routing efficiency and network-layer security (built-in the IPsec encryption mechanism) but also creates new ways of addressing and more advanced QoS mechanisms, as the protocol develops.

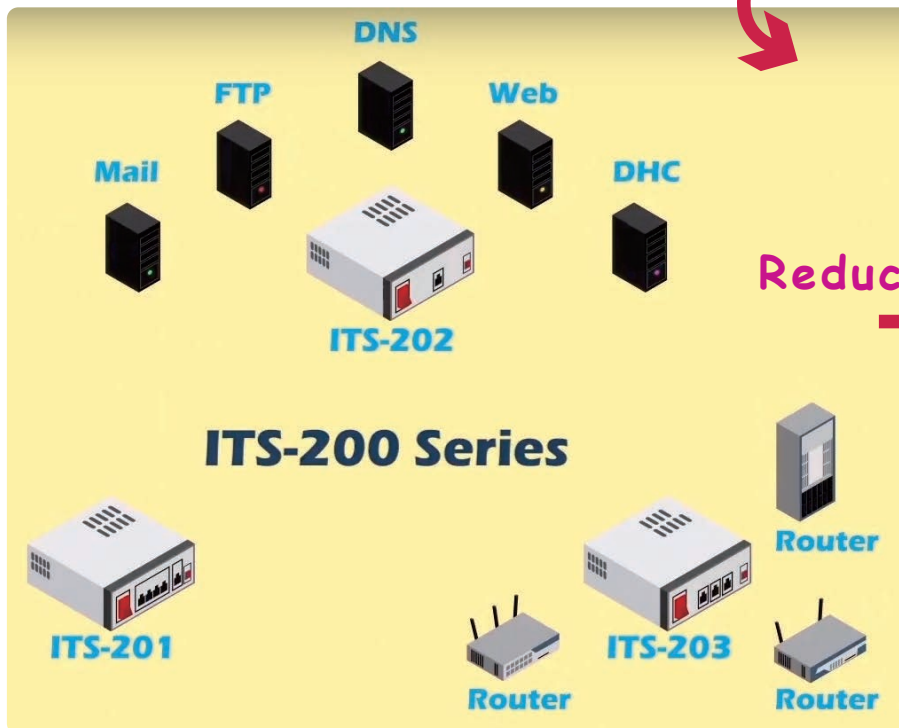
IPv6 128bit



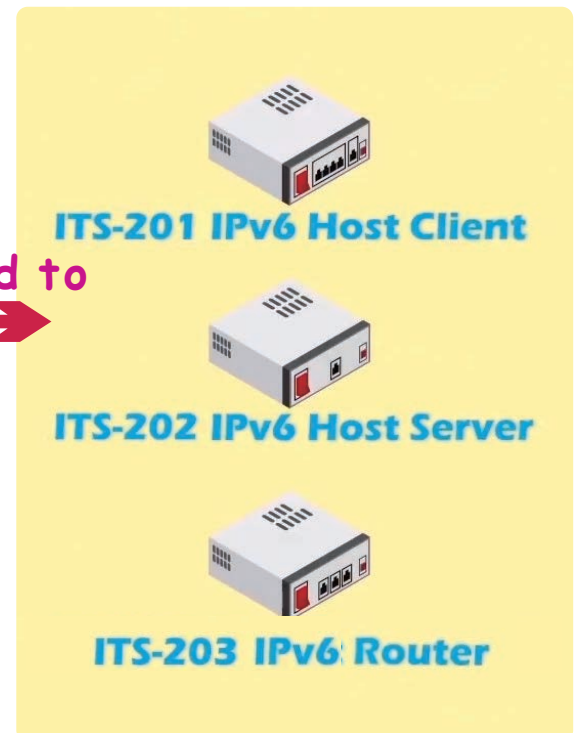
● The Simplified Learning Topology



Reduced to

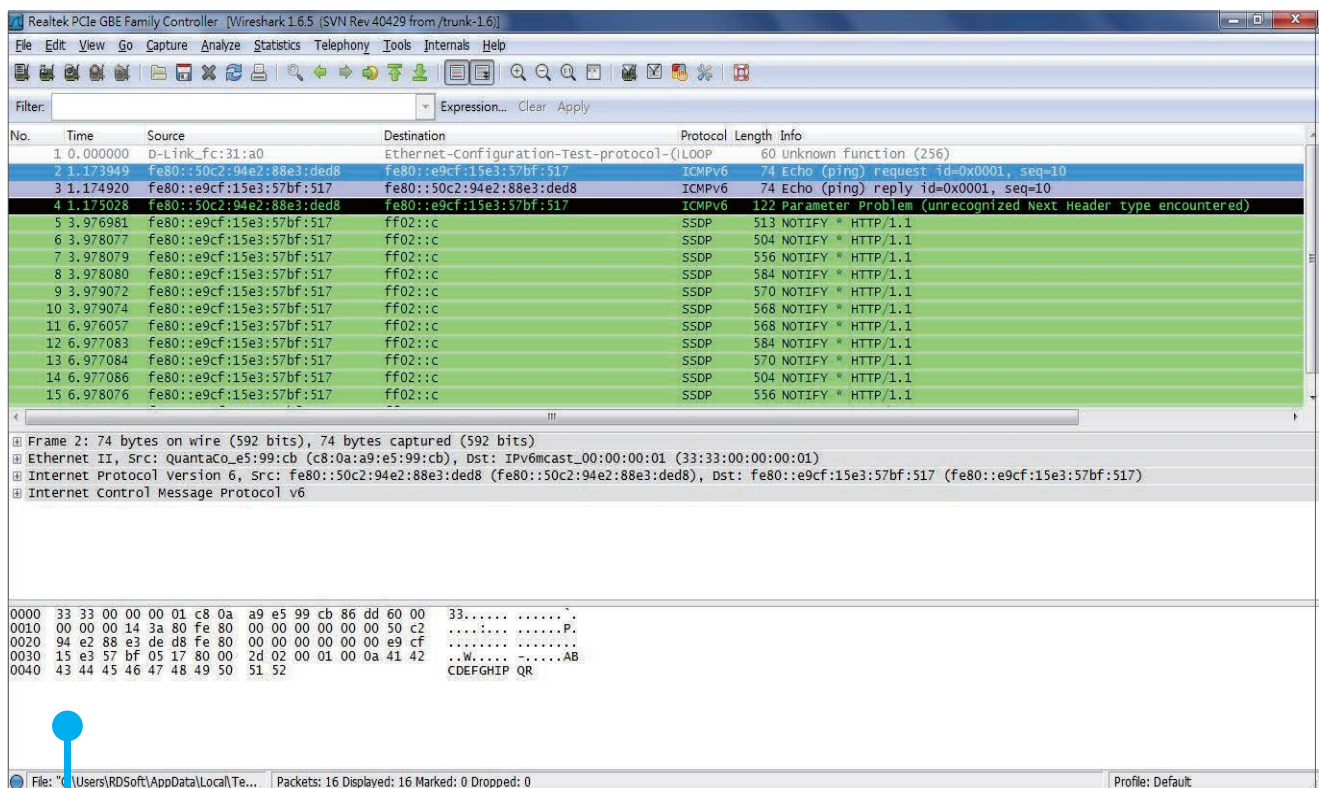
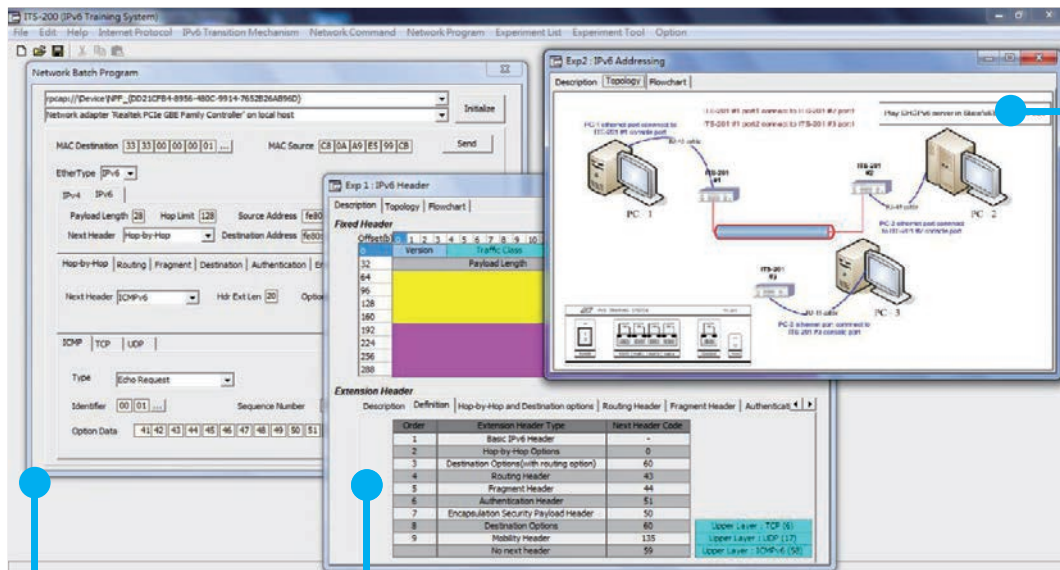


Reduced to



ITS-200 series serves for providing learners with a clear and comprehensive understanding of the protocol and operating behavior of the IPv6 specification. The complete system includes ITS-201 (host:client) , ITS-202 (host:server) and ITS-203 (router). The interaction of these three devices can perform experiments as a group or standalone.

● The Most Powerful Training Software



● The High Quality Training System



ITS-201 (host : client) can simulate over 10 kinds of packet protocols. It supports IPv4 and IPv6 Dual-Stack system and Remote Packet Capture Service (RPCAP). Using filterable TAP configure load-balancing and port-bonding to avoid browsed packet loss.



ITS-202 (host : server) is designed by a series of internet service and web-based GUI interface. ITS-202 can be easily configured as 5 types of servers to observe the behaviors in real applications behavior.



ITS-203(router) is designed by a series of network topology and user-friendly GUI software. It supports static and dynamic routing protocols which support RIPng and OSPFv3 (Open Shortest Path First for IPv6). Both are Interior Gateway Protocol(IGP).

