

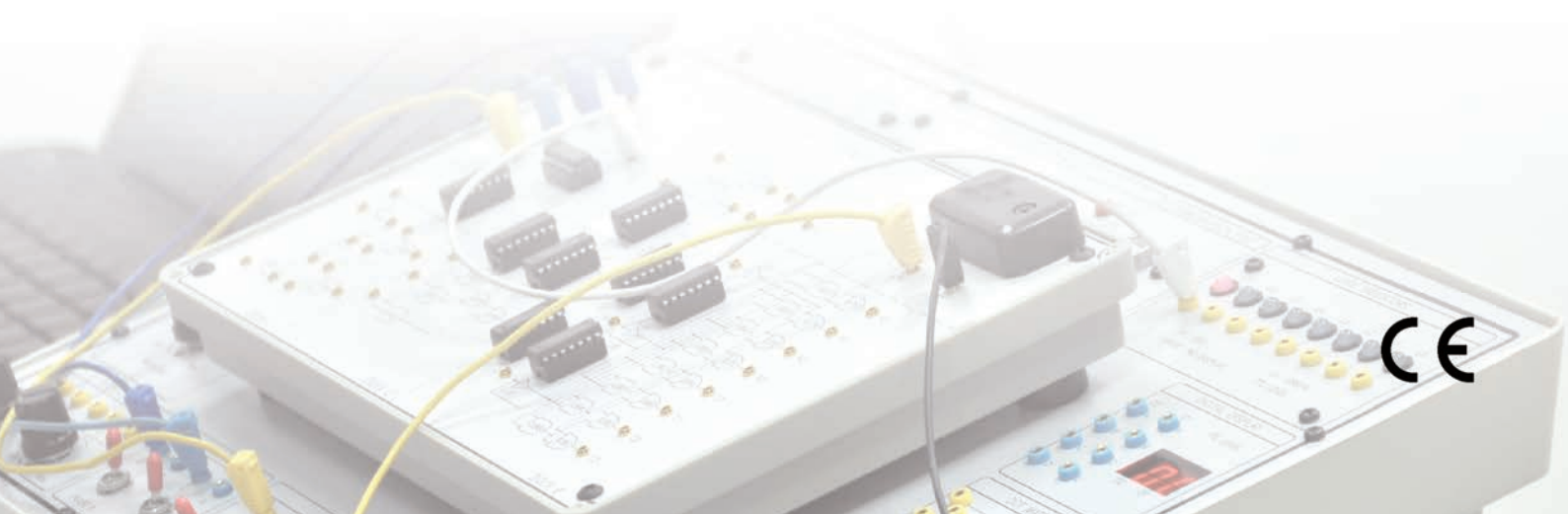
ETS-8000A

General Digitized Training System



The ETS-8000A is a basic digital logic circuit training system; the course includes hardware and software simulation.

All necessary equipment for digital logic experiments such as power supply, signal generator, indicator, measurement are installed on the main unit.



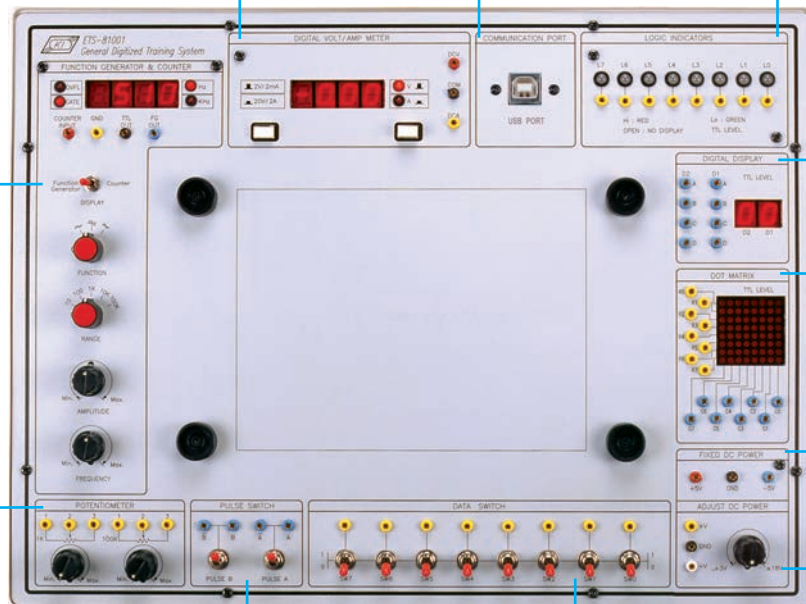
3 1/2-digit digital
volt / amp meter

USB Port

Logic
indicators

Signal
Generator Units

Potentiometer



Digital
Display

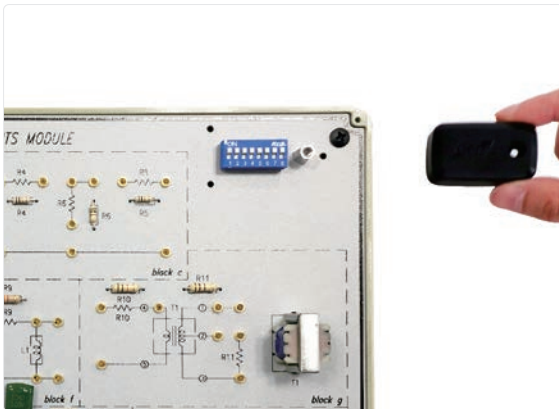
8x8 LED
dot matrix

Fixed DC
Power Supply

Dual
adjustable
DC Supply

Pulse Switch

DATA Switch

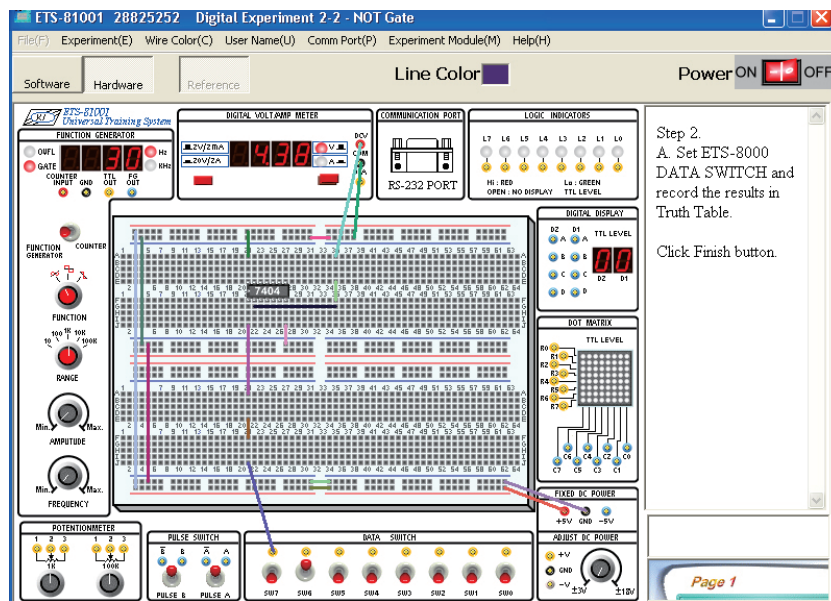


- ◆ Each module is equipped with an 8-bit DIP switch for fault simulations. Users can practice trouble shooting by setting the DIP switch to different positions.



- ◆ Comprehensive experiment manual and instructor's manual including combinational logic and sequential logic experiment circuits.

• The powerful circuit simulator software



Software simulation

- Simulate all the active status of digital logic circuits of ETS-8000A
- Hint for experiment procedure
- Automatically judge the line connection is true or false by computer
- Record experiment result

Hardware emulation

- Receive signal status of ETS-8000A platform through USB
- Display hint for how to connect and proceed from screen
- Automatically verify if the experiment result is correct or not

• List of Experiments

- Basic logic gates experiments
- Assembled logic circuits experiments
- Adder / subtractor experiments
- Decoder / encoder experiments
- Multiplexer experiments
- Basic Flip-Flop experiments
- Application of Flip-Flop experiments
- Counter experiments
- Application of digital logic

